



garden guide

2020

Skinner
GARDEN STORE



We get it.

The space around your house can hold as much meaning as the space inside. A tree planted generations before will be enjoyed by generations to come. That special hangout on the patio surrounded by mom's favorite flowers. The legacy and memories that stay with you for a lifetime.

From expert recommendations to professional consultation, design and installation, Skinner Garden Store's quality plants and materials complete the package. For over 50 years we're here to get what you're looking for.

Call or come in and see the possibilities for your next great space.

Landscape Services

785.233.9657

Skinner
GARDEN STORE

GRASSES GROUNDCOVERS VINES

BAMBOO

Believe it or not, Bamboo is actually a member of the grass family. This fast growing plant is well known for all the tall woody stems it produces. It can be an amazing landscape addition, creating quick screens and privacy as well as providing attractive evergreen to semi-evergreen foliage to enjoy. Bamboo has long been known as an aggressively spreading plant, and while that can still be the case with certain species, non-invasive, clumping-type bamboo selections are now becoming more readily available and are offered below. Once established, bamboo requires very little care and has very few problems that bother it. Of course, it is well known that panda bears love to eat bamboo, and they have been known to devastate small plantings, but that has not been proven to be a significant problem in this part of Kansas.

Mountain Bamboo

(*Fargesia rufa*)—Originating from the mountains of China, this is a cold hardy species with a clumping, non-invasive habit. An attractive plant with a mature size that fits a little bit easier into a lot of gardens. Grows best with afternoon shade. Height 6-8', clumping.



Yellow-Groove Bamboo

(*Phyllostachys aureosulcata*)—This is a vigorous running type bamboo, useful for screening. Dark green, semi-evergreen foliage and golden bamboo stems. Easy to grow, but give it space because it will spread! Height 10-15'+, running.

BLUESTEM

Blue Heaven Little Bluestem

(*Schizachyrium scoparius* 'Blue Heaven')—A selection introduced by the University of Minnesota with dark blue to burgundy summer foliage, changing to red to purple and violet in the fall. Taller, more upright selection. Height 3-4', spread 24-30".

Carousel Little Bluestem

(*Schizachyrium scoparius* 'Carousel')—A dwarf selection introduced through the Chicago Land Grows program. Rounded habit with superior resistance to lodging in the winter. Great fall color that includes copper, pink, tan and dark orange-red. Height 24-30", spread 24-30".

Red October Big Bluestem

(*Andropogon gerardii* 'Red October')—Green to blue-green foliage through the summer, occasionally with red highlights. Foliage changes to a stunning burgundy-red to scarlet-red in the fall. Amazing! Height 4-6', spread 2-3'.

Smoke Signal Little Bluestem

(*Schizachyrium scoparius* 'Smoke Signal')—Blue-green foliage changes to red-purple late in the summer and on into fall. Height 3-4', spread 18-24".

Standing Ovation Little Bluestem

(*Schizachyrium scoparius* 'Standing Ovation')—Foliage is blue cast with reddish tips. Sturdy, upright stems. Brilliant fiery red to maroon fall color. Height 2-4', spread 18-24".

Twilight Zone Little Bluestem

(*Schizachyrium scoparius* 'Twilight Zone')—Iridescent silvery mauve-purple highlights starting in midsummer that turns purpler as fall arrives. Upright, narrow growth. Height 3-4', spread 18-24".

DROPSEED

Prairie Dropseed

(*Sporobolus heterolepis*)—A very tough native prairie grass. This is a slow-growing, small species with rich emerald-green foliage throughout the summer changing to golden-yellow to orange in the fall. Sweetly fragrant flowers rise above the foliage late in the summer. Height 2-3', spread 2-3'.

FESCUE

Elijah Blue Fescue

(*Festuca ovina* var. *glauca* 'Elijah Blue')—Low tufted grass with fine, silver-blue foliage. Needs well-drained soil and full sun. Height 6-10", spread 8-12".

FOREST GRASS

All Gold Japanese Forest Grass

(*Hakonechloa macra* 'All Gold')—A bright, small grass selection that does great in the shade. Bright yellow foliage. Leaf coloration is best in light shade. Height 12-18", spread 18-24".

FOUNTAIN GRASS

Annual Purple Fountain

Grass

(*Pennisetum setaceum* 'Rubrum')—Outstanding ornamental purple foliage and foxtail blooms. Makes a large, attractive clump in one season. Although this plant technically is a perennial, it is not winter hardy enough to make it though our winters, so treat as an annual. One of the best! Height 3-4'. A 2003 Pride of Kansas Selection.

Black-seeded Fountain Grass

(*Pennisetum alopecuroides* 'Moudry')—A handsome form with long black plumes of flowers in the fall atop dark green foliage. Looks great incorporated into perennial borders. Height 2-3', spread 2-3'.

Burgundy Bunny Fountain

Grass

(*Pennisetum alopecuroides* 'Burgundy Bunny')—This little sport of 'Little Bunny' has green foliage, highlighted with fiery red later in the summer and fall. Attractive "bunny-tail" plumes late in the season. Height 12-18", spread 12-18".

Dwarf Fountain Grass

(*Pennisetum alopecuroides* 'Hameln')—Probably the best of the fountain grasses and definitely the most popular. Handy short habit makes it useful in a variety of settings. Showy, bottlebrush-like flower spikes adorn the plant through the late summer and on into the winter. Height 2-3', spread 2-3'.

Fountain Grass

(*Pennisetum alopecuroides*)—A very popular grass with showy, 5-7" long, bottle brush-like plumes late in the summer. Creates a wonderful effect. Looks great as a specimen or in mass plantings. Height 3-4', spread 3-4'.

Karley Rose Fountain Grass

(*Pennisetum orientale* 'Karley Rose')—An elegant selection with beautiful rose-purple flowers rising above rich green foliage. Height 2 1/2-3 1/2', spread 2-3'.

Little Bunny Fountain Grass

(*Pennisetum alopecuroides* 'Little Bunny')—Smallest of the fountain grasses reaching only 10-12" tall. Makes a small mound of soft green topped with cute little "bunny tail" plumes. Height 10-12", spread 12-15".

GIANT REED GRASS

Giant Reed Grass

(*Arundo donax*)—A bold, giant grass with bamboo-like canes and long, drooping, gray-green leaves. Foot-long flowers in late season. Height 10-14', spread 4-8'.

Variegated Giant Reed Grass

(*Arundo donax* 'Variegata')—A variegated form of this giant of a plant. Leaves and stems are striped creamy-white, creating an explosion of color in the garden. Spring growth is most vibrantly colored, fading through the summer to yellow-green. Absolutely stunning! Height 10-14', spread 4-8'.

GRAMA GRASS

Blonde Ambition Blue Grama Grass

(*Bouteloua gracilis* 'Bonde Ambition')—This is an attractive selection of one of our native prairie grasses. Unique flower spikes are attached at right angles to the stems and individual flowers resemble mosquito larvae, giving rise to another common name, "mosquito grass". Purplish fall color. Height 2-3', spread 2-3'.

PAMPAS GRASS

(*Saccharum ravennae*)—This is one of our most popular selections, and has been used in Kansas gardens for many years. Quickly develops into a very large plant topped with large showy plumes late in the summer. Gives great year round interest. Height 8-12', spread 4-6'.

REED GRASS

Avalanche Reed Grass

(*Calamagrostis acutifolia* 'Avalanche')—A variegated form of 'Karl Foerster'. Bright green foliage is accented with wide white centers. Flower stalks rise impressively above the foliage and are topped with pinkish-green flowers maturing to golden seedheads that last through the summer. Height 4-5', spread 2-3'.



Karl Foerster Reed Grass

(*Calamagrostis arundinacea* 'Karl Foerster')—Upright, narrow habit. Showy, narrow, spikey blooms start out pink in mid-summer, turn golden tan in fall. Looks great in mass plantings. PPA Perennial Plant of the Year 2001. Height 4-5', spread 2-3'.

SEA OATS

Northern Sea Oats

(*Chasmanthium latifolium*)—Bamboo-like grass with light green leaves and showy, pendulous, oat-like seed heads. Blooms are excellent in arrangements. Height 2-3', spread 12-18".

SEDGE

Blue Zinger Blue-gray Sedge

(*Carex glauca* 'Blue Zinger')—An attractive small plant with very thin, grassy blades of blue-gray foliage. Prefers moisture but will tolerate drier soils. Spreads slowly over time. Height 12-18", spread 12-18".

NEW!—Cedar Sedge

(*Carex eburnean*)—Hair-like leaves. Plants spread slowly to form a fine-textured groundcover under trees, shrubs, and other dry shaded locations. Semi-evergreen. Height 2-4", spread 8-12".

Fox Red Curly Sedge

(*Carex buchananii*)—An unusual plant with a unique "ever-brown" appearance. Very narrow leaves remain cinnamon-brown throughout the year. Makes a unique specimen for the garden unlike anything else you will come across. Excellent for winter effect. Height 18-24", Spread 2-3'.

NEW!—Palm Sedge

(*Carex muskingumensis*)—The glossy green leaves branch out from the main stem similar to a palm tree. Native to wooded lowlands, it does best in slightly damp soil in shade. Makes an excellent groundcover, and thrives in clay! Plant one foot on center as a groundcover or use individually as a foliage accent plant. Height 2-3', spread 2-3'.

NEW!—Pennsylvania Sedge

(*Carex pennsylvanica*)—Easily grown in average, dry to medium, well-drained soils in part shade to full shade. Prefers loose loams in dry soils in sun-dappled part shade. Most sedges prefer moist to wet soils, but not this one. Plants spread by rhizomes. Plants may self-seed in optimum growing conditions. Height 6-12", spread 6-12".

NEW!—Texas Sedge

(*Carex texensis*)—The shiny deep green foliage is 3-6" long and semi-evergreen. In late spring dainty green flower spikes are displayed above the leaves. Plants occur in part shade to partly sunny moist or dry sandy woods. This sedge has great landscape potential as a woodland groundcover and is a natural as a lawn alternative. Height 6", spread 12".

Variegated Japanese Sedge

(*Carex morrowii* 'Aurea Variegata')—A bright and showy selection with vivid golden-yellow and rich green variegated foliage. Does best in soils that don't get too dry. Height 12-15", Spread 12-18".

SILVER GRASS

Adagio Silver Grass

(*Miscanthus sinensis* 'Adagio')—Slender, silvery foliage forms a compact, graceful clump. Silvery-white blooms are held well above the foliage in the fall. Height 3-4', spread 2-3'.

Autumn Flame Grass

(*Miscanthus sinensis* 'Purpurascens')—Very upright, almost vertical habit. Green leaves take on a bright orange-red color in fall. Magenta-colored fans appear early, maturing to white. Height 3-4', spread 2-3'.

Cabaret Silver Grass

(*Miscanthus sinensis* 'Cabaret')—Copper colored plumes appear in late summer. Wide ribbon-like leaves have creamy-white centers. Height 4-6', spread 4-6'.

Dwarf Maiden Grass

(*Miscanthus sinensis* 'Yaku Jima')—A compact version of Maiden Grass. Dark green, delicate blades form a graceful, vase-shaped clump. Early bloomer. Height 3-4', spread 3-5'.

Graziella Silver Grass

(*Miscanthus sinensis* 'Graziella')—This form is similar to Maiden Grass, but with a few improvements. Silvery plumes late in the season are held well above the foliage making a more dramatic display and fall color is a wonderful burgundy-bronze. Height 5-6', spread 4-5'.

Little Zebra Grass

(*Miscanthus sinensis* 'Little Zebra')—Similar to Porcupine Grass but with a smaller growth habit. Green grass blades are banded with bright golden-yellow. Attractive pinkish-copper flower plumes late in the summer. Height 3-4', spread 3-4'.

Maiden Grass

(*Miscanthus sinensis* 'Gracillimus')—A very popular form with narrow leaves and a graceful "fountain-like" habit. Showy plumes emerge late in the season to add to the display. Great for winter interest in the landscape. Height 5-6', spread 4-5'.

Morning Light Silver Grass

(*Miscanthus sinensis* 'Morning Light')—Graceful, fine-textured, clumping grass with pastel green and white variegated foliage. Feathery plumes in fall. Height 4-5', spread 4-5'.

Porcupine Grass

(*Miscanthus sinensis* 'Strictus')—A popular, wide-bladed variegated selection. Bright green leaves accented with yellow bands. Stands more erect than Zebra Grass. Height 6-8', spread 3-5'.

Red-Silver Silver Grass

(*Miscanthus sinensis* 'Rotsilber')—The emerging flower plumes are a dramatic metallic-red before maturing to a silvery-white color. Slender fine-textured foliage forms a vase shaped clump. Height 5-7', spread 4-5'.

Variegated Silver Grass

(*Miscanthus sinensis* var. *variegatus*)—An old-time garden favorite. Brightly colored, wide-bladed selection. Leaves are creamy-white, striped with green. Tolerant of light shade. Height 4-6', spread 4-6'.

SWITCH GRASS

Cheyenne Sky Switch Grass

(*Panicum virgatum* (Prairie Winds TM))—Upright, blue-green foliage that takes on deep wine-red highlights in early summer. Airy, burgundy red, cloud-like plumes top the foliage in late summer. Burgundy foliage in the fall. Height 2-3', spread 1-2'.

Dallas Blues Switch Grass

(*Panicum virgatum* 'Dallas Blues')—Steel blue foliage topped with pastel-mauve flower heads in the fall. One of the best for blue color. Extremely hardy selection. Height 6-8', spread 3-4'.

Hot Rod Switch Grass

(*Panicum virgatum* 'Hot Rod')—Blue-green foliage takes on a deeper burgundy to maroon color through the summer. Compact form with a good vertical habit. Great color! Height 3-4', spread 2-3'.

Northwind Switch Grass

(*Panicum virgatum* 'Northwind')—Sturdy, upright growth with steel blue stems and olive-green foliage. This is a taller-growing selection that can reach 6' in height over the course of the growing season. Use in mass plantings for screening, privacy and background plantings. Height 5-6', spread 2-3'.

Shenandoah Switch Grass

(*Panicum virgatum* 'Shenandoah')—A tough selection of one of our native prairie grasses, this is one of the few red-foliaged grasses available that will survive our winters. Foliage is tipped with deep, blood-red highlights and seed heads share the same color late in the season. Wonderful reddish-purple fall color. Height 3-5', spread 2-3'.



AJUGA

Bronze Ajuga

(*Ajuga reptans* cvs.)—A low, dense, fast growing perennial creeping plant. Excellent for covering ground in shady places. Will tolerate sun if well watered. Blue flowers in early summer. Foliage is a dark bronzy-purple.

EUONYMUS

Purpleleaf Wintercreeper

(*Euonymus fortunei* var. *coloratus*)—Very popular groundcover plant. Dark green foliage creates a dense cover through the growing season. Leaves then stay on the plant through the winter, changing to a plum-purple. Height 12-18".

IVY

English Ivy

(*Hedra helix*)—A very hardy evergreen vine, great for use as a groundcover. Glossy, dark green foliage throughout the year. Requires shade. Height 4-6'.

LIRIOPE

Big Blue Liriope

(*Liriope muscari* 'Big Blue')—Broad, dark green strap-like leaves. Small, light lavender flowers are borne on 12-18" spikes in summer. Plant in full to partial shade. Height 12".

Creeping Liriope

(*Liriope spicata*)—Dark green, grass-like leaves throughout the season. Produces grape hyacinth-like flowers in the summer. Spreading habit makes this a good groundcover. Very tolerant of tree root competition and shade. Height 12".

Silver Dragon Liriope

(*Liriope spicata* 'Silver Dragon')—Dark green, grass-like leaves with a bright white variegation. Spreading habit.

Silvery Sunproof Liriope

(*Liriope muscari* 'Silvery Sunproof')—White variegated form that does well in full sun or shade. Lavender flowers stand above foliage. Height 12".

Variegated Liriope

(*Liriope muscari* 'Variegata')—Same as the green Liriope but with yellow and green variegation. Height 12".

PACHYSANDRA

Japanese Pachysandra

(*Pachysandra terminalis* 'Green Carpet')—Evergreen groundcover spreading by rhizomes. Excellent groundcover for shade. Prefers acid soil and abundant supply of organic matter. Height 6-8".

VINCA

Vinca Minor

(*Vinca minor*)—Shiny, dark green foliage with blue flowers. Grows flat on the ground. Makes an excellent groundcover for shady areas. Evergreen and very hardy. Height 6-8".



Planting Groundcovers

Use this table to help estimate how many plants your site will need.

Inches Between Plants	Sq. Ft. Area 100 Plants Will Cover	No. Plants Per Sq. Ft.
4"	11 sq. ft.	9.0
6"	25 sq. ft.	4.0
8"	44 sq. ft.	2.25
10"	70 sq. ft.	1.45
12"	100 sq. ft.	1
15"	156 sq. ft.	1 per 1.56 sq. ft.
18"	225 sq. ft.	1 per 2.25 sq. ft.
24"	400 sq. ft.	1 per 4 sq. ft.

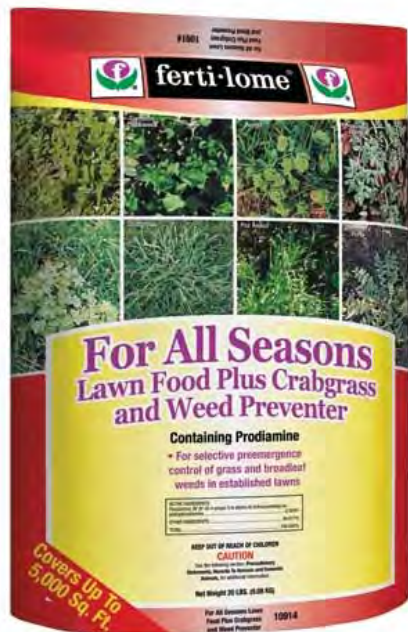
G ardening G rid

Start here with a sketch of the area you wish to transform!





LAWN CARE & TURF TIPS



CRABGRASS PREVENTERS

(Pre-emergent Weed Controls)—Apply crabgrass preventers early in the spring. Make sure you have it down by the time the Redbuds are blooming (approximately mid April).

- BETTER—Hi-Yield Turf & Ornamental Weed & Grass Stopper** (Dimension), no fertilizer—Season long control with only one application. Will also kill germinated crabgrass that has not gone beyond the two to three leaf stage. Useful for late spring applications (late April to early May). Also great as a weed preventer in landscape beds.

- BEST!—Fertilome All Seasons Lawn Food Plus Crabgrass and Weed Preventer** (Proflaminate), 16-0-8—with trace elements. Season long control with only one application. Best if applied early in the spring, so try to have it down NO later than early April.

TIP!—All of these applications must be thoroughly watered in before they are effective.

WEED KILLERS

(Post-emergent Broadleaf Weed Controls)—Apply weed killers when weeds are actively growing. Fall applications typically provide best control but treatments can be made throughout the season as long as temperatures are appropriate.

- BETTER—Fertilome Weed-Out**—This is available in both a liquid and a granular formulation. Liquid applications generally work the best. Use with Hi-Yield Spreader-Sticker.

- BEST!—Fertilome Weed Free Zone**—Great for harder to kill weeds. More effective at wider range of temperatures than other products. This is available in both a liquid and a granular formulation. Liquid applications work the best.

TIP!—Granular applications of these broadleaf weed killers should be applied to wet foliage and then watered in a couple of days later for maximum effectiveness.

DISEASE CONTROLS

(Fungicides)—Preventative applications work best, and they will be a lot cheaper. Don't forget to water all products in according to label directions.

- Fertilome F-Stop** (Myclobutanil)

LAWN FOODS

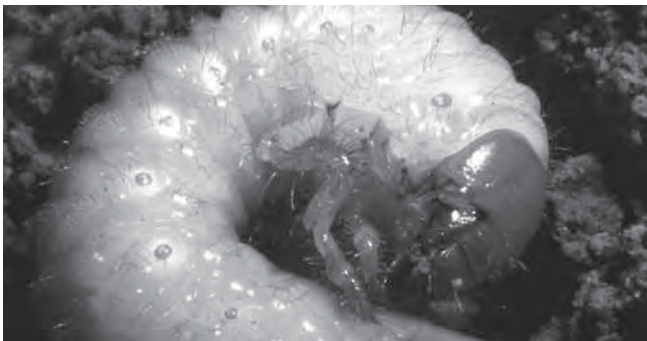
(Fertilizers)—Go light on fertilizer in the spring, do not apply any during the summer and then hit it hard in the fall. That is when your lawn will benefit the most from your efforts.

- Fertilome Lawn Food Plus Iron**, 24-0-4 with trace elements and extra iron for greening -**Early Fall**—Apply around Labor Day.
- Fertilome Winterizer**, 25-0-6 with trace elements—**Late Fall**—Apply between Halloween and Thanksgiving.
- Fertilome Green Maker**, 18-0-6 with trace elements plus 5% Iron—**Late Spring**— Sometimes used as a late spring application. Contains slow release nitrogen that will feed into your lawn into early summer.



- ☐ *Fertilome New Lawn Starter*, 9-13-7 with trace elements—**Seeding/Reseeding**—Ideal for using at the time of any seeding, reseeding or sodding project.

TIP!—If you fertilize only once a year, do it around Labor Day. If you fertilize twice, do it around Labor Day and then again around Thanksgiving.



INSECT CONTROL

Only treat if you have a problem or really anticipate one. Keep in mind that some products are most effective on insects in the turf canopy (things like ants, chinch bugs and fleas) and others are most effective on insects in the soil (grubs!).

Hi-Yield Turf Ranger—Turf canopy insect control (ants, fleas, chinch bugs and others)

Hi-Yield Grub Free Zone II—Soil insects (grubs)

Natural Guard Grub Control—Soil insects (grubs)

Tip!—The best grub controls need to be applied *before* you have a problem. Use the following application timing for best control.

Mid May to mid July—Hi-Yield Grub Free Zone II

July to mid August—Natural Guard Grub Control

TURF TIPS

- **FALL** is the most important time of the year when it comes to cool season lawn care.
- A thick, healthy lawn, maintained at the right mowing height is your best defense against weeds.
- If you choose to irrigate, more thorough, less frequent waterings are typically the best.
- Read the label on lawn products **BEFORE** you apply and then **FOLLOW** those instructions.
- Granular applications can stain pavement. Always sweep or blow off patios, driveways, sidewalks and streets after applying.
- Most lawn applications need to be watered in following the application.
- Preemergent herbicides need to be applied **BEFORE** weeds come up; postemergent herbicides are used to kill weeds **AFTER** they have already established.
- Plant only the highest quality grass seed. Cheap seed will frequently have a lower germination rate and is commonly contaminated with troublesome weed seeds. You don't want to intentionally plant weeds!



Gardening Numbers

Coverages

Bark Mulches

3 cu ft will cover

36 sq ft 1" deep

18 sq ft 2" deep

12 sq ft 3" deep

9 sq ft 4" deep

1 cu yd of mulch will cover 100 sq ft 3-4" deep

Peat Moss

1 cu ft of compressed peat moss will cover

12 sq ft 2" deep

Rock

1 cu yard covers 120 sq ft 2" deep

1/2 cu ft covers 2.5 sq ft 2" deep

Our Promise to You...

We will do as much as we can to help you achieve success.

We are very selective about that plants and gardening products we offer because we know that strong, healthy, well-adapted plants and quality gardening products are critical for success...but great products alone, won't build great gardens.

We also have a team of gardeners and horticulturists to answer questions and offer advise...please use our expertise! We can help you pick the right plants, choose the right products, and do the right things to give your new plants and your gardening projects, the best chance for success.

Your success is important...to both of us!

Plant Guarantee...

We offer guarantee on many of our Trees and Shrubs.

If, after proper planting and care, those Trees and Shrubs you purchase at Skinner Garden Store fail to live, we'll help you get a replacement. Store credit will be issued to you, equal to the purchase price of the original plant. That credit can then be used towards the purchase a replacement plant of your choice.

Your sales receipt will show you the original purchase price. It will also indicate if your plant is covered by this guarantee. Just check the line directly below the plant name. If it says, "Guarantee", then it is! If that line is blank or says something to indicate that is not guaranteed, then it's not. The sales receipt is required for all replacements.

If you have any questions about this guarantee, just let us know. Likewise, if at any time you have questions about caring for your new plants, please ask. Your gardening success is important to us!

Now for the fine print...because there's always fine print!

Vandalism, neglect, animal damage, winter injury or other "Acts of God" are not covered by this guarantee. Those issues are beyond our control.

Trees and Shrubs planted in raised planters or containers are not covered by this guarantee.

This guarantee is for Trees and Shrubs as indicated

by your sales receipt. It does not cover annuals, perennials, tropicals, houseplants, vegetables or certain Trees and Shrubs we consider to be marginally hardy. Seed and sod are not guaranteed.

Labor is not guaranteed and a planting charge will be assessed for the installation of any replacement plant.

This guarantee is for store credit equal to the original purchase price only. No cash refunds will be given.

We will issue store credit to replace a guaranteed tree or shrub once. The replacement plant is not guaranteed.

How do you keep up with it all?

Get your info right in your inbox!
Timely advice and specials.
Get "The Dirt" delivered to your inbox! Tips, ideas and special offers all delivered right to you. Hear from your Skinner Garden Store experts with timely garden info. Sign up is easy, just visit SkinnerGardenStore.com and sign-up there.



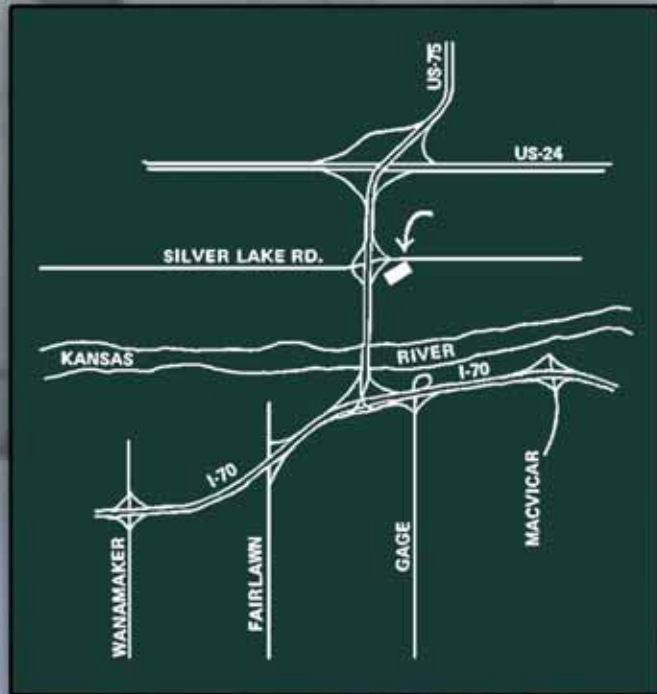
Listen to "Garden Answers" on AM 580 WIBW and 104.9FM every Saturday morning at 8am. You can call in or text your question to (785) 272-9429 and ask Cameron about all things gardening!



Gift cards for your favorite gardener!



www.SkinnerGardenStore.com



Open 7 Days a Week!

**4237 NW Lower Silver Lake Rd.
at North Highway 75 &
Lower Silver Lake Rd
Topeka, Kansas 66618**

Listen to our radio show "Garden Answers," every Saturday morning on WIBW 580 AM and 104.9 FM 8-9 am

Live streaming with link on our website

Skinner
GARDEN STORE

785.233.9657

SkinnerGardenStore.com